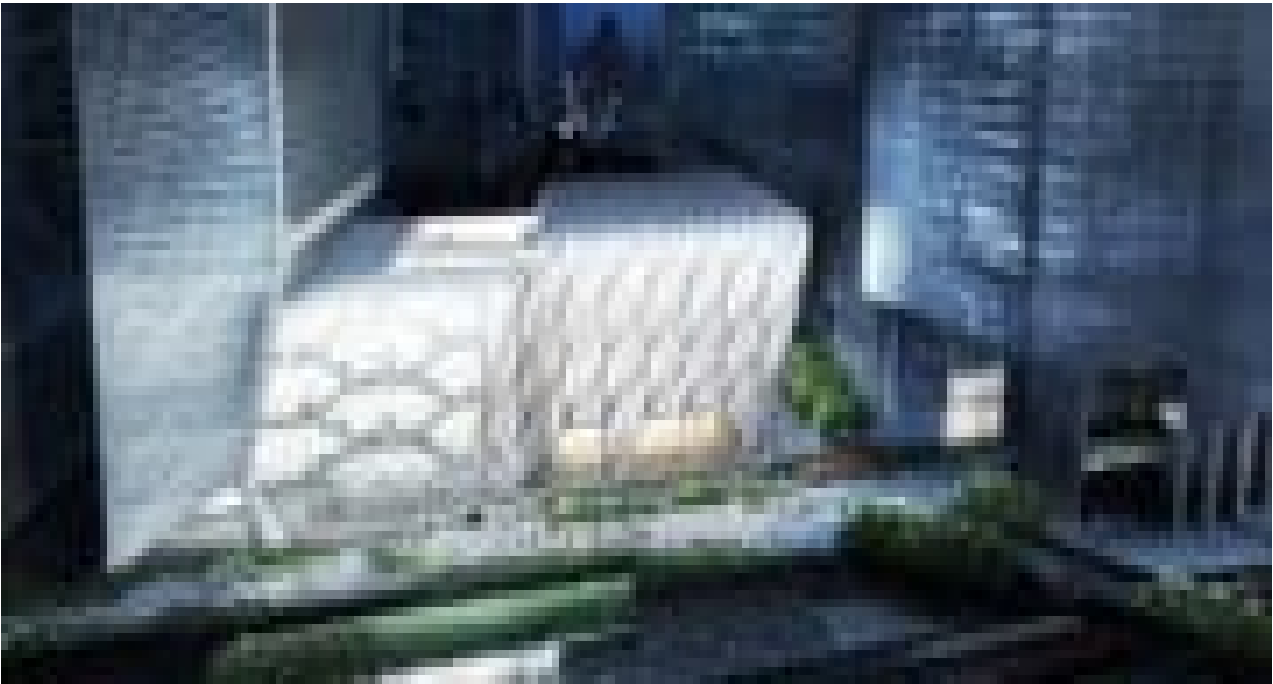


How The Shed was made: The kinetic architecture of New York's newest cultural institution

The kinetic architecture of New York's newest cultural institution

Professor Chris McAuliffe



The Shed's concept is simple: It's the 120-foot tall building that moves. This idea is both its architectural hallmark and its metaphor for the future of culture. Opened on April 5th 2019, New York City's half-billion dollar, hybrid museum-meets-performance space can shape shift to double its indoor perimeter in five minutes.

Courtesy of [Engadget](#) YouTube Published on Apr 3, 2019

Image 1 - Culture Shed, New York - Diller Scofidio + Renfro in collaboration with Rockwell Group by Diller Scofidio + Renfro CC BY-SA 3.0 Wikimedia

[View our selection of USA Tours](#)

Travel to the USA to explore its thriving urban culture, some of the world's best and most comprehensive art museums and greatest modern architecture in five grand cities, Chicago, Boston, New York, Philadelphia & Washington DC.
